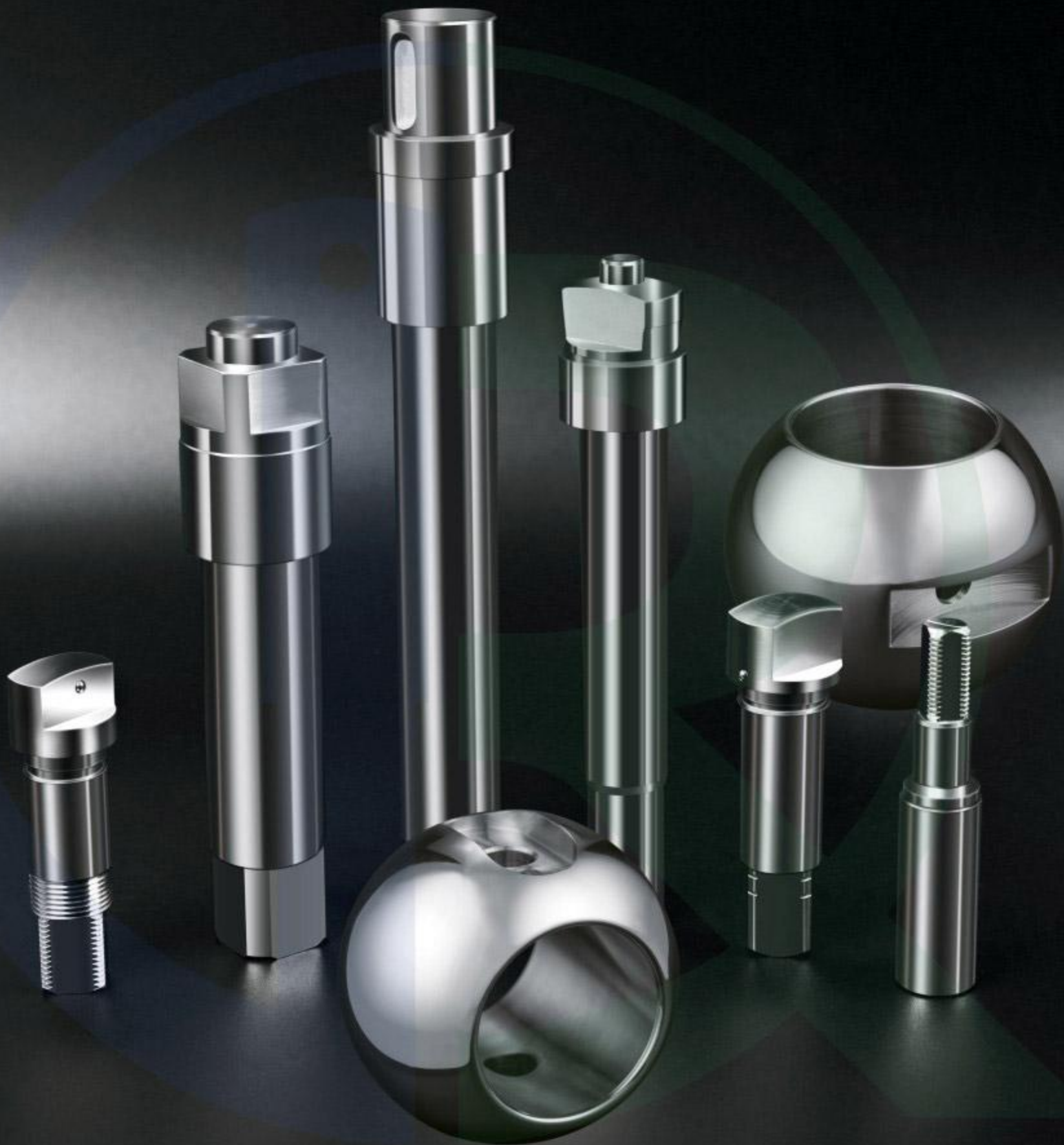


专业阀配制造商

PROFESSIONAL VALVE PARTS MANUFACTURER





2010

公司创建于(年)
since (year)

5000⁺

年产值(万)
annual output value(Ten thousand)

5000⁺

使用面积(m²)
Usable area (m²)

100⁺

员工人数(位)
Number of employees (bit)

企业 简介

COMPANY PROFILE

浙江锐信金属制品有限公司创立于2010年，坐落于中小企业发祥地-浙江温州；公司是一家集设计，生产，销售的专业阀门配件制造商；产品主要涉及阀门的核心零部件--球阀，阀杆，阀座；

公司创始人及生产技术团队在阀门行业深耕20余年，对阀门的设计，生产技术有着丰富的经验，能一站式解决所有客户的疑难问题；并欢迎OEM和ODM生产；

公司产品全部采用一体式锻造技术并且严格按标准热处理工艺，从而确保产品的结构组织致密，可以适应严苛的工况环境；产品精加工完全采用CNC数控车床，保证产品完全按图纸的设计规范；后工序的喷涂，配磨，抛光，清洗，激光，清洗等工序均严格按规范要求；公司配备精良的检测设备（三次元检测仪，光谱仪，粗糙度仪，轮廓仪，硬度计等）我们确保每一件到客户手上的产品都是值得考验的；

公司将通过不断的学习和提升为客户提供更优质的产品 and 更好的售后服务；随着时代的进步和新材料，新工艺的改进和升级，公司将继续在阀门配件行业深耕，努力打造并且成为现代化优质的阀门配件制造商；

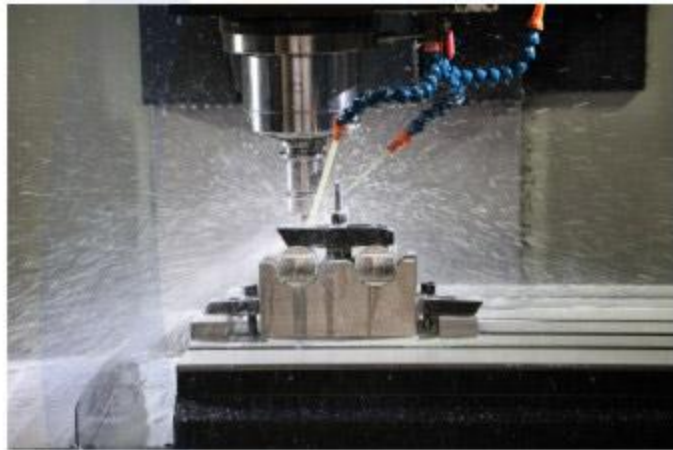
Zhejiang Ruixin Metalworks Co., Ltd. was founded in 2010 and is located in the birthplace of small and medium-sized enterprises - Wenzhou, Zhejiang; the company is a professional valve accessories manufacturer integrating design, production and sales; the products mainly involve the core components of the valve - valve ball, valve stem, valve seat;

The founder and production technical team of the company have been deeply involved in the valve industry for more than 20 years. They have rich experience in valve design and production technology, and can solve all customers' difficult problems in one-stop; OEM and ODM production are welcome;

The company's products all adopt integrated forging technology and strictly follow the standard heat treatment process, so as to ensure that the structure of the product is dense and can adapt to harsh working conditions; CNC lathes are used for product fine machining to ensure that the products are completely in accordance with the design specifications of the drawings;The post-process spraying, grinding, polishing, cleaning, laser, cleaning and other processes are strictly in accordance with the specifications; the company is equipped with sophisticated testing equipment (three-coordinates measuring machine {CMM} , spectrometer, roughness meter, profiler, hardness tester, etc.) We ensure that every product that comes to customers is worth testing;

智造 | **MANUFACTURING**
实力 | **STRENGTH**





精良设备/强大实力

锐信对每个产品都进行严格的检测。检测员高度负责的用心溶于每一个部件中，加上最先进的检测设备和严格的科学化管理，使每一个生产的成品经得住顾客的精心挑选。锐信郑重承诺让每一个生产产品都达到出厂标准。这就是锐信产品得以畅销的秘诀所在。

Sophisticated equipment / Powerful strength

Ruixin carries out strict inspection on each product. Inspectors are highly responsible for each component, coupled with the most advanced testing equipment and strict scientific management, so that each finished product can withstand the careful selection of customers. Ruixin solemnly promises to make every production product meet the ex-factory standard. This is the secret of the best-selling products of Ruixin.

锐信 | RUIXIN
阀杆 | STEM



RXST-001



RXST-002



RXST-003



RXST-004



RXST-005



RXST-006



RXST-007



RXST-008



RXST-009

锐信 | RUIXIN
球体 | BALL



RXBL-001



RXBL-002



RXBL-003



RXBL-004



RXBL-005



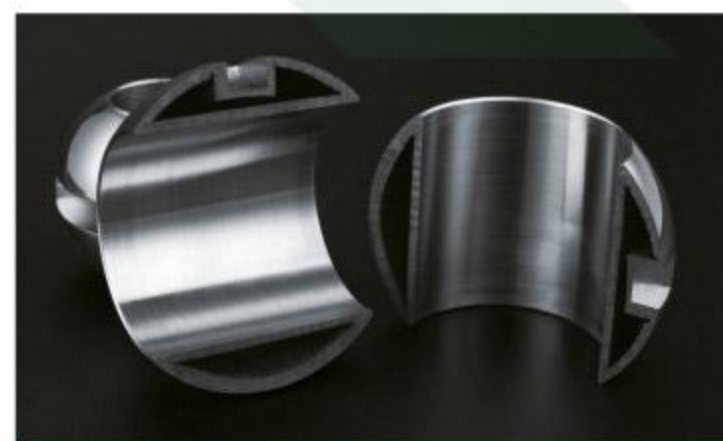
RXBL-006



RXBL-007



RXBL-008



RXBL-009

为用户创造合作价值 01

CREATE COOPERATIVE VALUE FOR USERS

02 为社会构建和谐企业

BUILD A HARMONIOUS ENTERPRISE FOR
THE SOCIETY



锐信阀配
RUIXIN PARTS

IMPROVE THE GROWTH PLATFORM FOR
EMPLOYEES

为员工提升成长平台 03

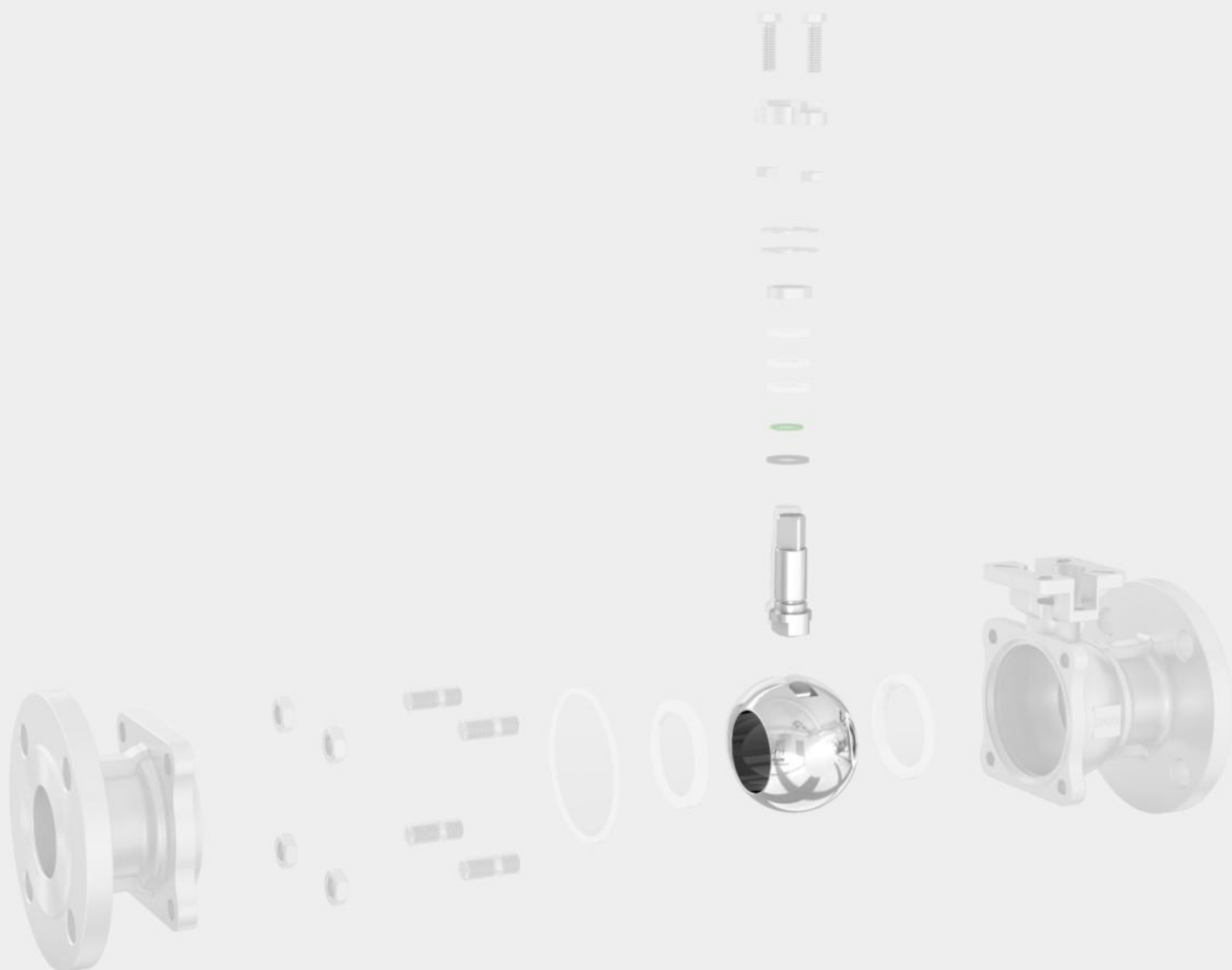
CREATE EXCELLENCE AND EFFICIENCY
FOR ENTERPRISE DEVELOPMENT

04 为企业发展创优增效

锐意进取 诚实守信

FORGE AHEAD, BE HONEST AND
TRUSTWORTHY

www.ruixin-metal.com



浙江锐信金属制品有限公司

ZHEJIANG RUIXIN METALWORKS CO., LTD.

地址：浙江省温州市龙湾区永兴街道滨海三道17号

Q Q: 66604707

邮箱: ruixin0517@163.com

网站: www.ruixin-metal.com

TEL: 137 7775 9677 / 156 6983 9908

Address: No. 17 Binhai 3rd road, yongxin street, Longwan District, Wenzhou City, Zhejiang Province, China

QQ: 66604707

Email: ruixin0517@163.com

Web: www.ruixin-metal.com



企业官网/Web



微信/WeChat